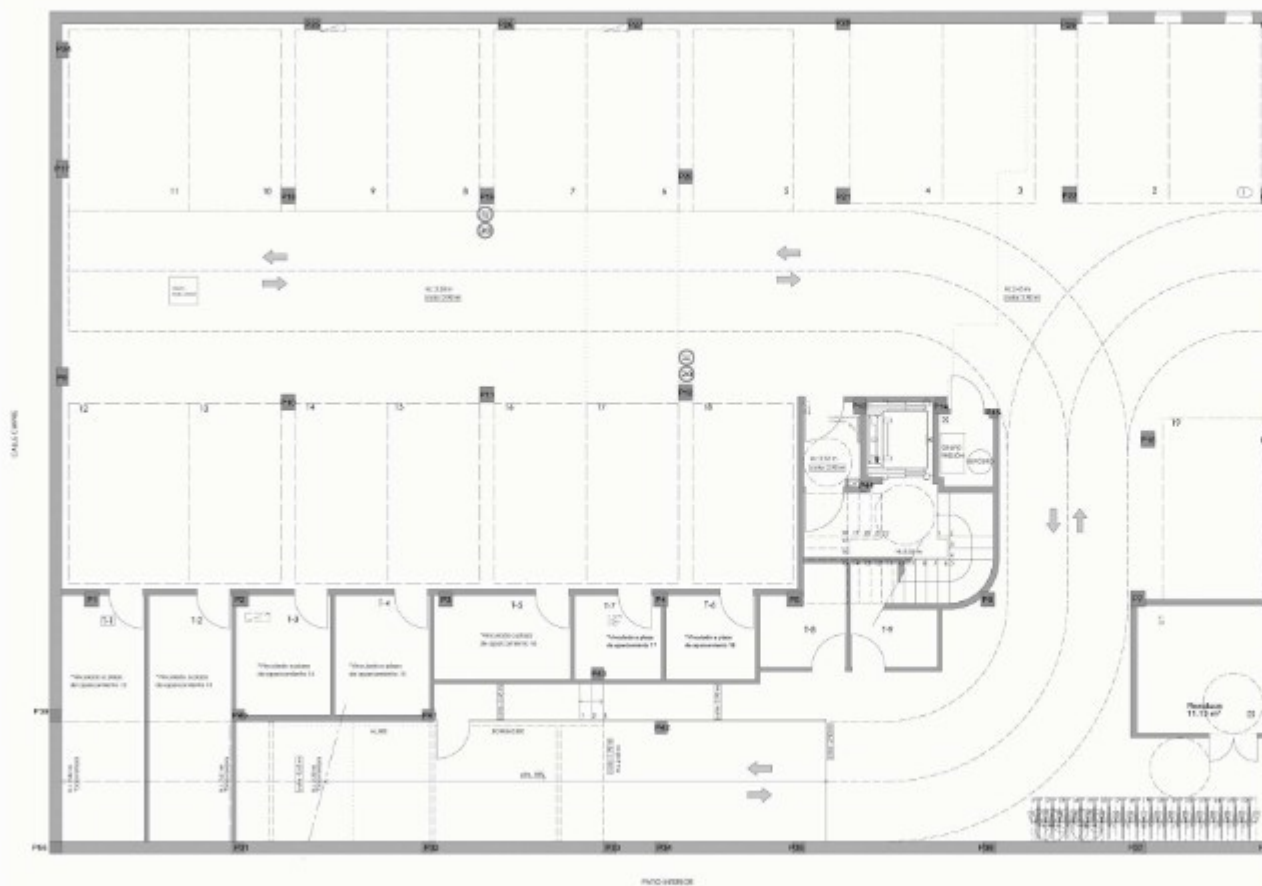




SÓTANO - I



SUPERFICIES CONSTRUIDAS

Trastero 1	12.65 m ²
Trastero 2	12.75 m ²
Trastero 3	6.96 m ²
Trastero 4	7.09 m ²
Trastero 5	7.05 m ²
Trastero 6	4.69 m ²
Trastero 7	4.40 m ²
Trastero 8	4.65 m ²
Trastero 9	4.51 m ²